



RAPID-AIR

OPERATING INSTRUCTIONS FOR RH30, RH40 & RH50 SERIES HYDRAULIC STOCK REELS

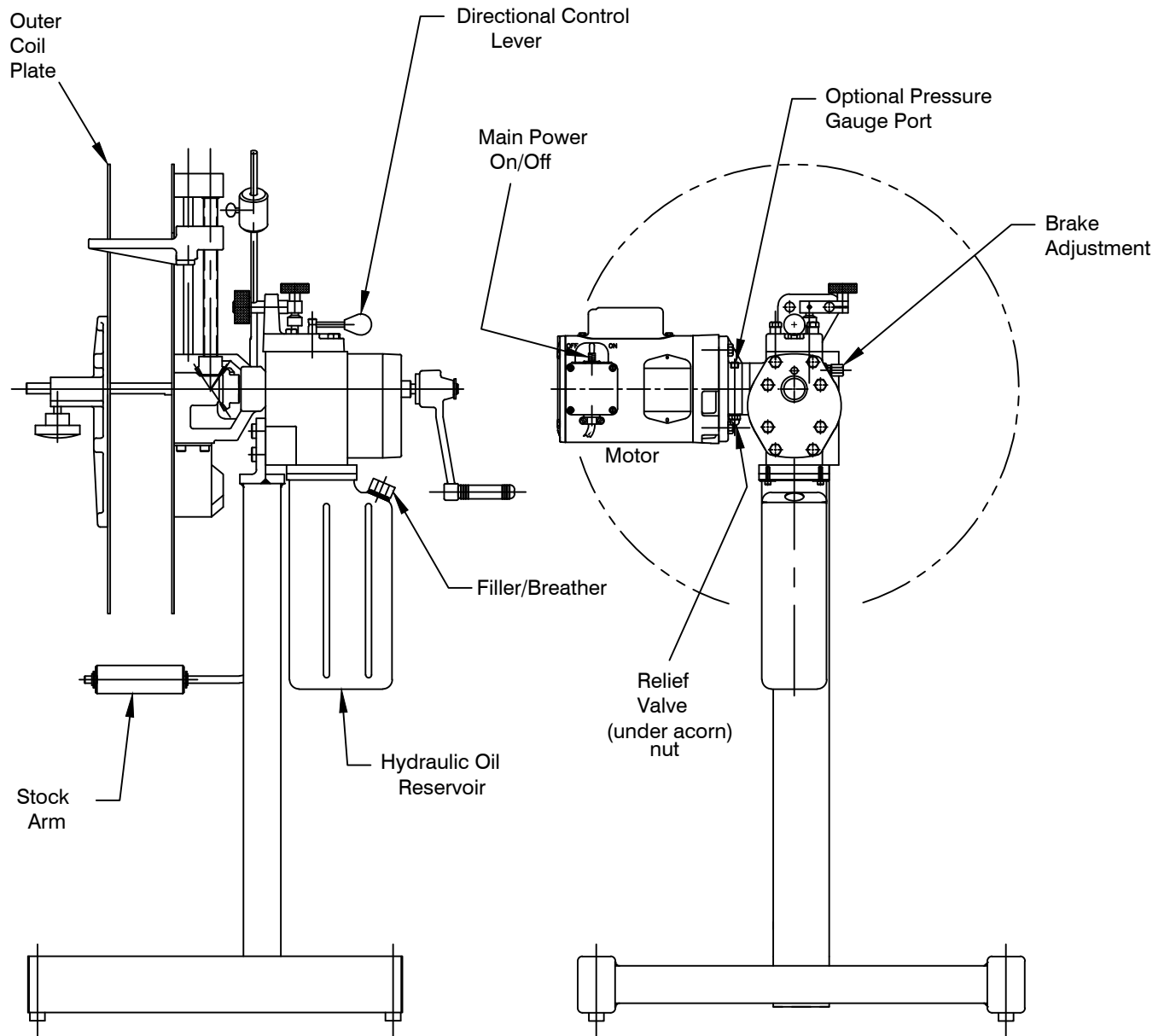
RAPID-AIR
4601 KISHWAUKEE ST.
ROCKFORD , IL. 61109-2925
PHONE: (815) 397-2578
FAX: (815) 398-3887
WEB SITE: www.rapidair.com

TABLE OF CONTENTS

PAGE

1. HYDRAULIC STOCK REEL DIAGRAM
2. WEIGHTS & CAPACITIES
3. INSTALLATION
4. OPERATION
5. MAINTENANCE
6. MAINTENANCE
7. TROUBLESHOOTING
8. ASSEMBLY DRAWING
9. PARTS LIST

HYDRAULIC STOCK REEL



WEIGHTS & CAPACITIES

ADJUSTABLE CENTER STOCK REEL

MODEL	MAX. COIL DIA.	MAX. COIL WIDTH	MAX. COIL WEIGHT	COIL I.D. RANGE	MAX. RPM
RH34A	24"	4"	150 lbs.	5"-16"	80
RH35A	30"	4"	150 lbs.	5"-16"	80
RH36A	36"	4"	150 lbs.	5"-16"	80
RH45A	30"	6"	250 lbs.	9"-20"	80
RH46A	36"	6"	250 lbs.	9"-20"	80
RH56A	36"	6"	400 lbs.	9"-20"	70
RH58A	48"	6"	400 lbs.	9"-20"	70

FIXED CENTER STOCK REEL

MODEL	MAX. COIL DIA.	MAX. COIL WIDTH	MAX. COIL WEIGHT	SHAFT DIA.	MAX. RPM
RH34F	24"	4"	150 lbs.	1 1/2"	80
RH35F	30"	4"	150 lbs.	1 1/2"	80
RH36F	36"	4"	150 lbs.	1 1/2"	80
RH45F	30"	6"	250 lbs.	1 1/2"	80
RH46F	36"	6"	250 lbs.	1 1/2"	80
RH56F	36"	6"	400 lbs.	1 3/4"	70
RH58F	48"	6"	400 lbs.	1 3/4"	70

Electrical requirements:

115/230v, 1ph, 50/60hz

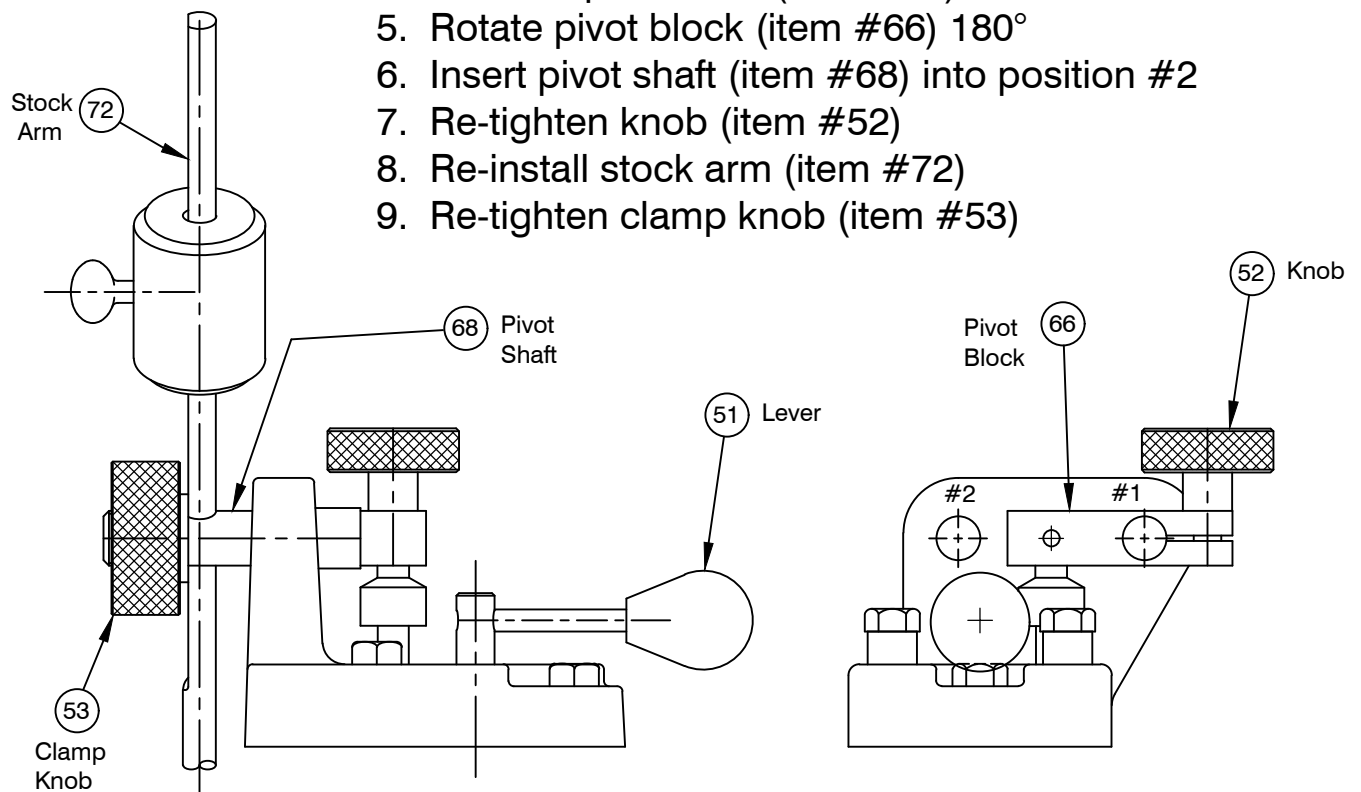
INSTALLATION

1. Your stock reel is fully assembled and ready to be put into position. Visually inspect unit for damaged or loose parts due to shipment. If there is physical damage, consult carrier.
2. Install reel on level surface with sufficient clearance for loading and unloading coils. For safe operation secure unit to floor.
3. Your unit was shipped with shipping plug in filler/breather port of the reservoir. Remove shipping plug and install breather before operation.
4. To load a coil on a fixed center reel, remove outer coil plate, install coil, re-install outer coil plate. To install a coil on adjustable center reel, remove outer coil plate, install coil on centering arms and adjust centering arms until tight on coil I.D. (do not over tighten as this will deform coil). Re-install outer coil plate.
5. Your stock reel is now ready for operation.

OPERATION

Your unit is shipped with the stock arm mounted in position #1 (see diagram below). In position #1 the reel speed will increase as the stock arm is raised. Your reel can also be set up so that the reel speed will increase as the stock arm is lowered. To set your reel up to increase speed as stock arm is lowered follow these steps.

1. Loosen clamp knob (item #53)
2. Remove stock arm (item #72)
3. Loosen knob (item #52)
4. Remove pivot shaft (item #68)
5. Rotate pivot block (item #66) 180°
6. Insert pivot shaft (item #68) into position #2
7. Re-tighten knob (item #52)
8. Re-install stock arm (item #72)
9. Re-tighten clamp knob (item #53)

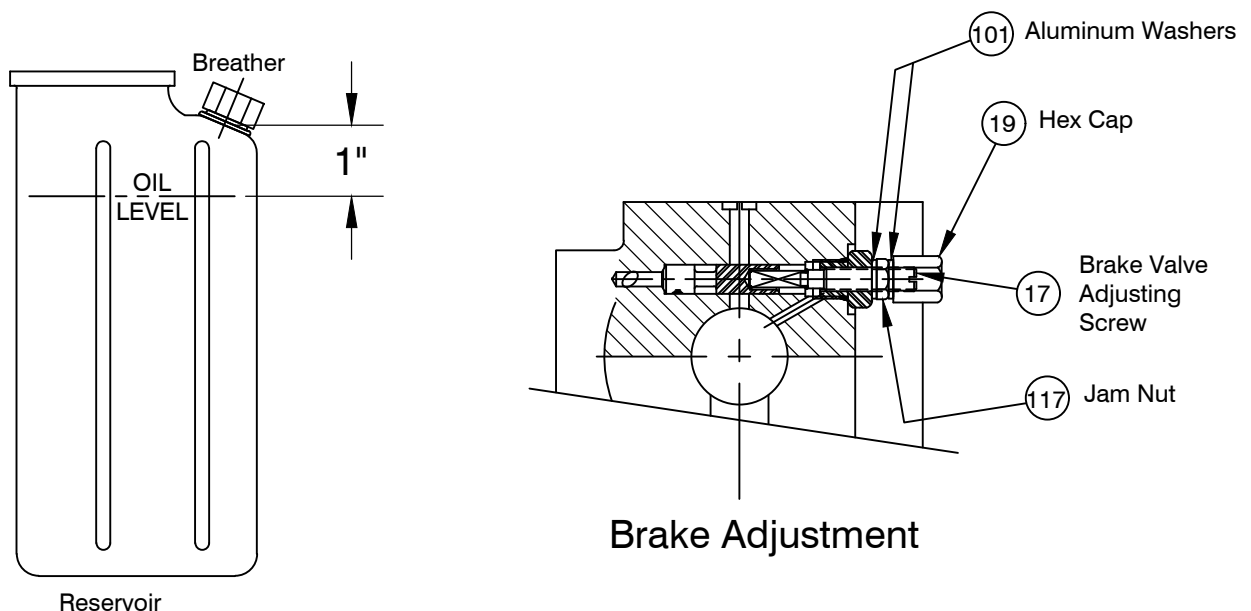


Clockwise/Counterclockwise - Use lever (item #51) to change rotational direction of your reel. The direction can be changed while the unit is running.

MAINTENANCE

CAUTION! - Disconnect electrical power before performing any service to this machine.

Hydraulic Oil - Use paraffin based hydraulic oil with a viscosity of 150-200 SSU at 100° F. The reservoir capacity is approx. 2.2 quarts. Fill to 1 inch below the reservoir breather. Oil should be changed every 2000 hours.



Brake valve adjustment is preset at the factory so that the reel head stops within one revolution or less when power is shut off or stock arm is in the rest position.

If you should need to re-set the brake valve pressure, follow the steps below:

1. Remove hex cap (item #19).
2. Loosen Jam nut (item #117).
3. Turn brake adjusting screw (item #17) with screwdriver, clockwise for more breaking force, counterclockwise for less breaking force.
4. Re-tighten jam nut (item #117).
5. Re-install hex cap (item #19).

MAINTENANCE

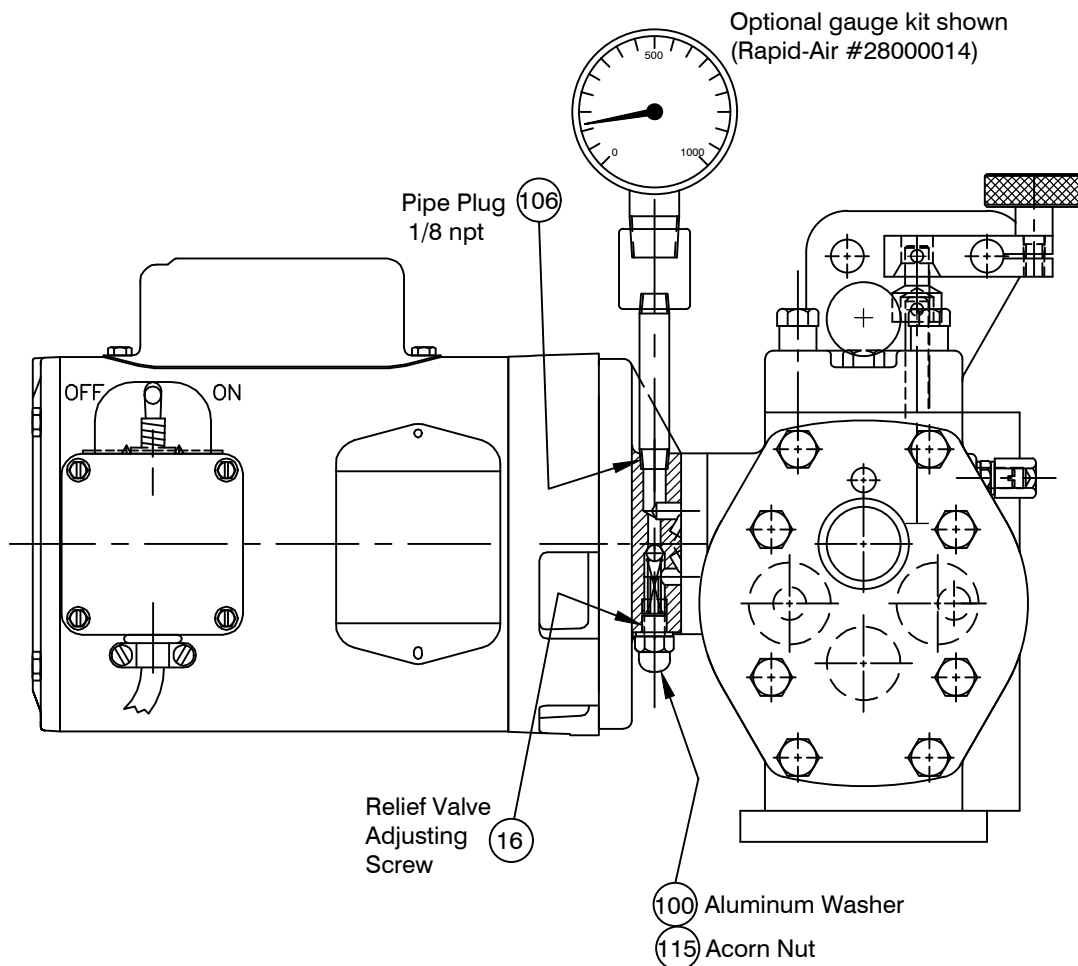
Relief valve pressure is preset at the factory as follows:

Standard units with 1/4 hp motor - 300 PSI

Standard units with 1/2 hp motor - 700 PSI

If you should need to re-set the relief valve pressure, follow the steps below:

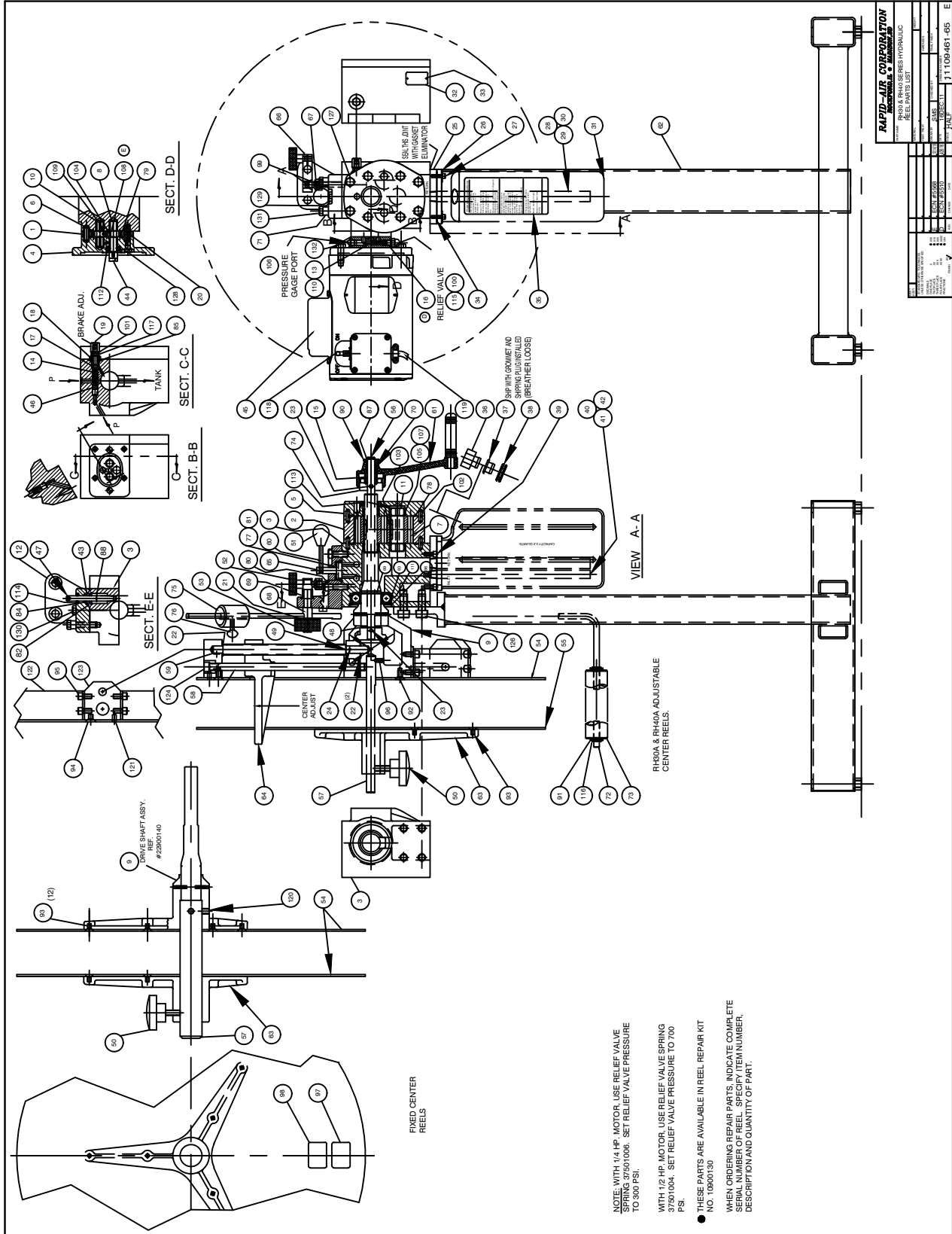
1. Remove pipe plug (item #106).
2. Install pressure gauge (can be purchased from Rapid-Air).
3. Remove acorn nut & aluminum washer (item's #100 & #115).
4. Turn relief valve adjusting screw (item #16) with screwdriver to desired pressure.
5. Re-install acorn nut & aluminum washer (item's #100 & #115).



TROUBLESHOOTING

1. Problem - Leakage of oil and bearing grease thru front bearing.
Cause - Unit operating without vented plug (breather) resulting in sealed system and pressure build-up.
2. Problem - Leakage around gasket of reservoir.
Cause - Overfilling of reservoir, operating without vented plug.
3. Problem - Leakage from vented plug, oil foaming.
Cause - Overfilling of reservoir, worn pump shaft oil seal.
4. Problem - No output torque, everything appears normal.
Cause - Diaphragm lift out of directional control valve, hole in diaphragm, brake valve missing.
5. Problem - No braking action when control valve is opened, reel continues to turn.
Cause - Brake valve spring broken or missing, brake valve stuck, not enough compression on brake spring.
6. Problem - Output shaft chatters or jumps on rapid closing of control valve.
Cause - Brake valve spring too long or too stiff.
7. Problem - Electric motor runs but reel will not operate, no hydraulic pressure.
Cause - Motor running in wrong direction, rotation must match cast arrow on motor mounting flange.
8. Problem - Brake chatter or erratic jerky operation.
Cause - Not enough compression on brake spring.
9. Problem - Reel is noisy.
Cause - Too much compression on brake spring.

ASSEMBLY DRAWING



RAPID-AIR CORPORATION	
P30 & P40 SERIES HYDRAULIC REEL PARTS LIST	
NO.	DESCRIPTION
1	...
2	...
3	...
4	...
5	...
6	...
7	...
8	...
9	...
10	...
11	...
12	...
13	...
14	...
15	...
16	...
17	...
18	...
19	...
20	...
21	...
22	...
23	...
24	...
25	...
26	...
27	...
28	...
29	...
30	...
31	...
32	...
33	...
34	...
35	...
36	...
37	...
38	...
39	...
40	...
41	...
42	...
43	...
44	...
45	...
46	...
47	...
48	...
49	...
50	...
51	...
52	...
53	...
54	...
55	...
56	...
57	...
58	...
59	...
60	...
61	...
62	...
63	...
64	...
65	...
66	...
67	...
68	...
69	...
70	...
71	...
72	...
73	...
74	...
75	...
76	...
77	...
78	...
79	...
80	...
81	...
82	...
83	...
84	...
85	...
86	...
87	...
88	...
89	...
90	...
91	...
92	...
93	...
94	...
95	...
96	...
97	...
98	...
99	...
100	...
101	...
102	...
103	...
104	...
105	...
106	...
107	...
108	...
109	...
110	...
111	...
112	...
113	...
114	...
115	...
116	...
117	...
118	...
119	...
120	...
121	...
122	...
123	...
124	...
125	...
126	...
127	...
128	...
129	...
130	...
131	...
132	...
133	...
134	...
135	...
136	...
137	...
138	...
139	...
140	...
141	...
142	...
143	...
144	...
145	...
146	...
147	...
148	...
149	...
150	...
151	...
152	...
153	...
154	...
155	...
156	...
157	...
158	...
159	...
160	...
161	...
162	...
163	...
164	...
165	...
166	...
167	...
168	...
169	...
170	...
171	...
172	...
173	...
174	...
175	...
176	...
177	...
178	...
179	...
180	...
181	...
182	...
183	...
184	...
185	...
186	...
187	...
188	...
189	...
190	...
191	...
192	...
193	...
194	...
195	...
196	...
197	...
198	...
199	...
200	...

NOTE: WITH 1/4 HP. MOTOR, USE RELIEF VALVE SPRING 37501006. SET RELIEF VALVE PRESSURE TO 3000 PSI.

WITH 1/2 HP. MOTOR, USE RELIEF VALVE SPRING 37501004. SET RELIEF VALVE PRESSURE TO 700 PSI.

● THESE PARTS ARE AVAILABLE IN REEL REPAIR KIT NO. 10800130

WHEN ORDERING REPAIR PARTS, INDICATE COMPLETE SERIAL NUMBER OF REEL, SPECIFIC ITEM NUMBER, DESCRIPTION AND QUANTITY OF PART.

